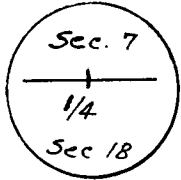


CERTIFIED LAND CORNER RECORDATION

T-15-N, R-66-W.

DESCRIPTION OF CORNER EVIDENCE FOUND, AND ORIGINAL RECORD (If known)

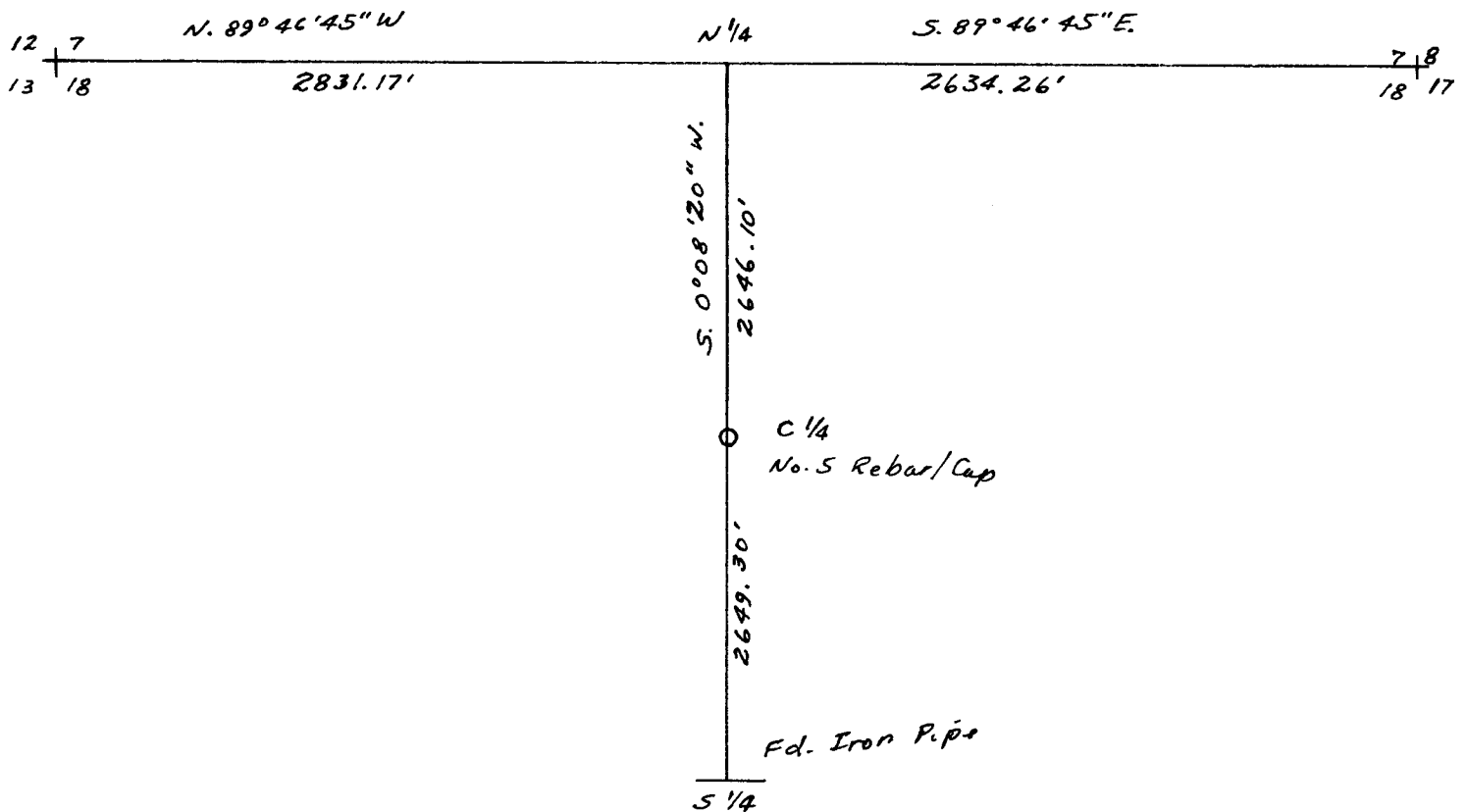


Fd. Well set stone, almost white in color, 1/4 on north face, M on south face. (Set by Malcom D. Martin 4-15-65). No evidence of original monument ~~of original~~ described as a lime stone 18" x 12" x 6"

DESCRIPTION OF MONUMENT AND ACCESSORIES ESTABLISHED TO PERPETUATE THE ORIGINAL LOCATION OF THIS CORNER:

Set No. 5 Rebar with Aluminium I. D. Cap at point established by single proportional distances. Location falls beside stone set by Malcom D. Martin in 1965. No. 5 Rebar with Alum. Cap set as remonumented corner, stone left as accessory.

SKETCH, WITH COURSE AND DISTANCE TO ADJACENT CORNER IF DETERMINED IN THIS SURVEY. (May Sketch or Paste Reproduction on Reverse Side.)



I, Edward C. Fry certify that I have carefully performed ~~or reviewed~~ the work done on the diagrammed corner as reported on this recordation form and approve the same.

Edward C. Fry P.E./L.S. #662
Signature of Surveyor Registration No.

STATE OF WYOMING,
Office of Clerk and Recorder,
County of Saramie

317701

This "corner record" was filed for record on the 22 day of February, 1979, was noted on the cross-index plat and is assigned page No. _____, in book No. _____.

James C. Whitehead
County Official

Cross Index No. <u>23</u>	T. _____	R. <u>66</u>	Mer.
	T. <u>15</u>	R. _____	Mer.
	T. _____	R. _____	Mer.
	T. _____	R. _____	Mer.
	T. _____	R. _____	Mer.
	T. _____	R. _____	Mer.